



ELEVATE — YOUR — MEETING

WELCOME

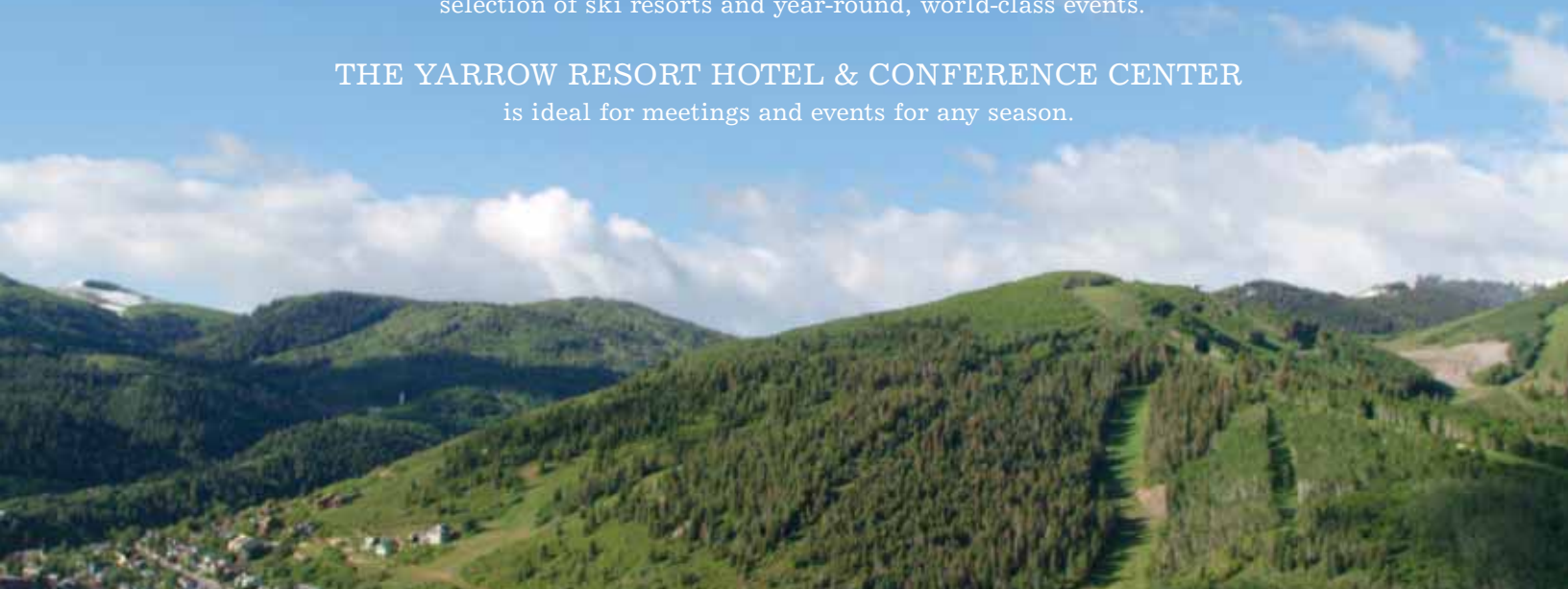
to the Yarrow Resort Hotel & Conference Center, an inviting retreat in one of North America's most celebrated mountain resort towns.

PARK CITY, UTAH

is considered one of the most accessible mountain destinations in North America. Park City is also home to an exciting selection of ski resorts and year-round, world-class events.

THE YARROW RESORT HOTEL & CONFERENCE CENTER

is ideal for meetings and events for any season.

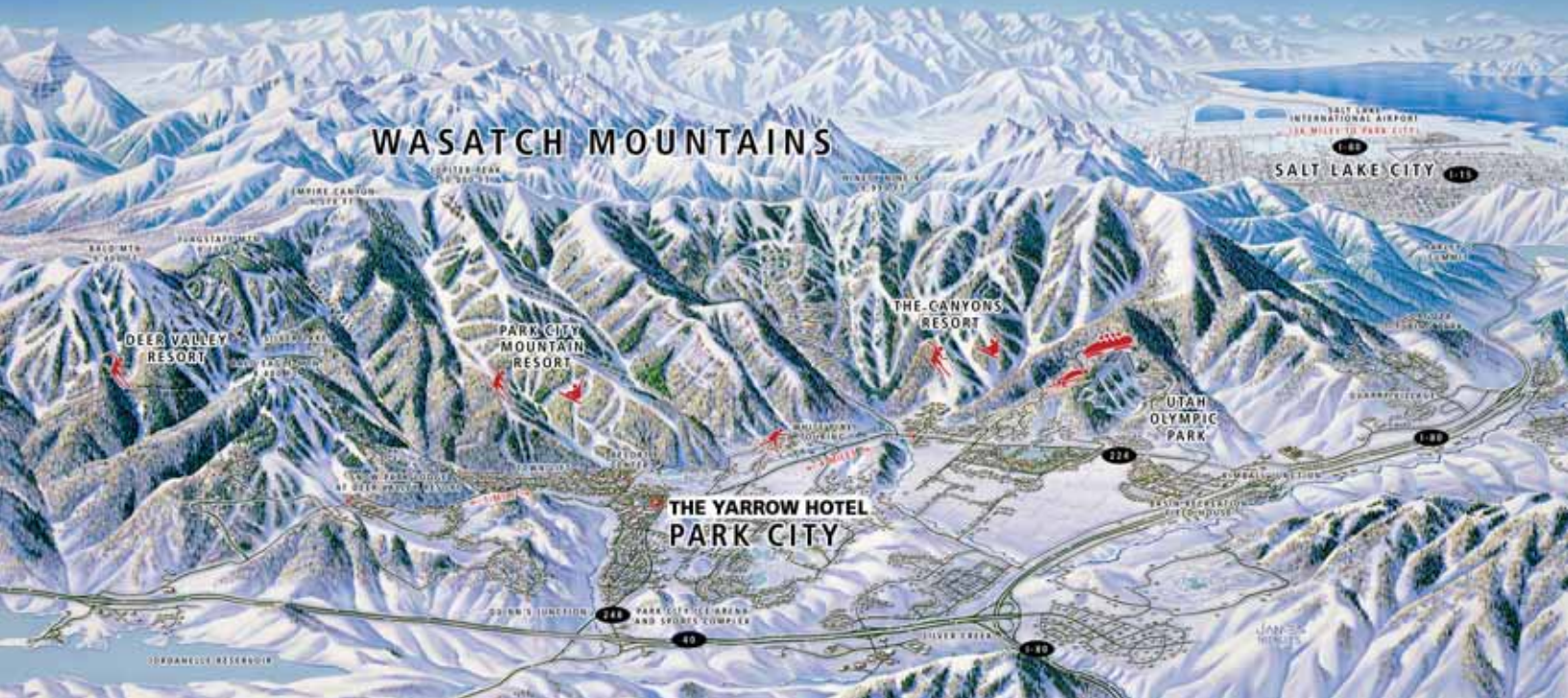


 **THE YARROW**
Resort Hotel & Conference Center
PARK CITY, UTAH



The Yarrow Resort Hotel is a great value year-round in a remarkably refreshing mountain destination. A meeting at The Yarrow will maximize the return on investment for attendees and planners alike.

The Salt Lake City International Airport, located 35 miles away, has more than 900 daily scheduled flights, many arriving before noon.



BANQUET SERVICES

The Yarrow offers eleven versatile meeting rooms with over 12,000 square feet of function space, including a beautiful ballroom, to accommodate up to 600 guests. Our professional staff can bring together all the elements for a smooth and successful event, providing clear and careful planning, preparation, and follow-through for catering, audio/visual, and guest services.

Versatile catering options and custom menus may be prepared to match your budget and special requests. Complete meeting packages and government menus are also available.

AUDIO VISUAL

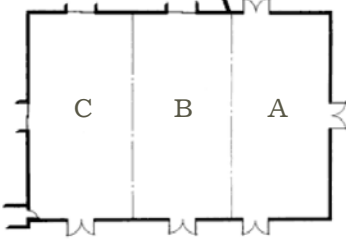
Wasatch Audio/Visual, Park City's premier provider of complete audio/visual services, is located on-site. Their technical expertise and professional on-site representatives ensure a smooth event, whether it is microphone for one or networked laptops for 100.

FIRST FLOOR

SECOND FLOOR

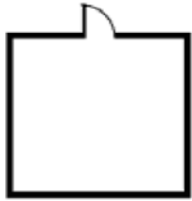
All lodging and meeting rooms are under one roof. All meeting rooms have both wireless Internet access and dedicated hard-wired Internet service. All second-floor meeting rooms have windows offering natural light and outstanding views.

Courtyard Area



SUMMIT BALLROOM

Offers 5,100 square feet of unobstructed space and is divisible into three sound-proof sections.

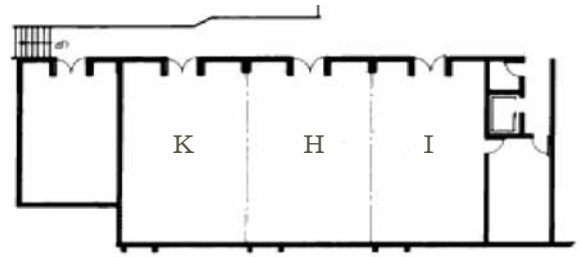


EXECUTIVE BOARDROOM

The executive conference table seats up to 18 in plush chairs, with dedicated screens and whiteboards.

COURTYARD TENT

Our seasonal tent with dedicated flooring, temperature control, lighting and electricity is located within one of the Hotel's courtyards.

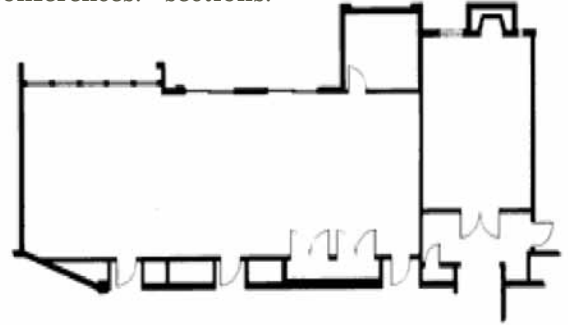


ALPINE ROOM

Ideal for breakouts and small conferences.

IVERS, HEARST & KEARNS ROOMS

Offers 2,380 square feet of unobstructed space or may be divided into three sections.



MOUNTAIN VIEW ROOM

Offers 1,240 square feet of unobstructed function space with spectacular views of the ski runs of Park City Mountain Resort.

JUDGE BOARDROOM

Features a fireplace and natural light.

MEETING ROOM CAPACITIES - Audio/visual setup may reduce capacities

FIRST FLOOR

SECOND FLOOR

SQ. FT.	DIM.	HGT.	TH.	CR.	CONF.	HS.	U-Shape	RDS.	CRES. RDS.	REC.
SUMMIT BALLROOM										
5100	85' x 60'	15'	600	350	-	-	-	432	300	600
Summit A										
1680	28' x 60'	15'	200	100	20	42	35	144	90	200
Summit B										
1680	28' x 60'	15'	200	100	20	42	35	144	90	200
Summit C										
1740	29' x 60'	15'	200	100	20	42	35	144	90	200
EXECUTIVE BOARDROOM										
462	21' x 22'	10'	-	-	18	-	-	-	-	-
COURTYARD TENT (seasonal)										
2400	40' x 60'	15'	200	-	-	-	-	184	138	250
IVERS, HEARST & KEARNS										
2380	64' x 35'	8'	200	120	-	42	52	216	108	300
Ivers										
840	24' x 35'	8'	60	30	-	28	24	48	36	60
Hearst										
770	22' x 35'	8'	50	30	-	28	24	48	36	60
Kearns										
770	22' x 35'	8'	60	30	-	28	24	48	36	60
ALPINE										
360	18' x 20'	8'	-	-	16	-	-	-	-	-
MOUNTAIN VIEW										
1240	62' x 20'	10'	110	54	20	48	42	88	66	150
JUDGE										
357	21' x 17'	8'	-	-	16	-	-	-	-	-



GUESTROOM AMENITIES

The Yarrow offers 181 freshly renovated guestrooms, including studios and suites.

- Deluxe rooms with one king or two queen beds
- Studios include kitchenette & fireplace
- Balconies with great mountain views
- Complimentary high-speed internet
- 100% non-smoking
- Compact refrigerator
- Coffee/tea maker
- Electronic in-room safe
- Air conditioning
- Voice mail
- On-demand movies & premium channels
- Daily housekeeping
- Daily newspaper
- Hair dryer, alarm clock/radio, iron/ironing board

HOTEL AMENITIES

The Yarrow offers full service amenities and excellent customer service in a convenient location.

- Mountain Grill, on-site restaurant featuring contemporary American cuisine
- Yarrow Social Club, on-site sports pub for members & guests
- Heated outdoor swimming pool & hot tub
- Complimentary wireless internet
- Starbucks Coffee Kiosk in our new lobby
- Fitness facility
- 24-hour customer service desk
- Business Center
- Group lift ticket sales
- Ski rental & storage
- Concierge & bell service (winter only)
- Safety deposit boxes
- Valet laundry service & guest laundry
- Adjacent to 24-hour grocery store & movie theater
- Complimentary city-wide transit system



PARK CITY, UTAH

Three world-class ski resorts are located less than three miles from the hotel. The small town setting is home to a cosmopolitan community with world-class events.

- Home to Park City Mountain Resort, The Canyons and Deer Valley Ski Resort
- Four golf courses within four miles
- Year-round concerts and festivals
- Historic Main Street
- Kimball Junction Outlet Mall Shops
- Olympic Sports Park
- Recreation and sporting events
- Day spas and fitness centers
- Salt Lake City Airport 35 miles away
- Complimentary city-wide transit system



Contact the Group Sales Department for a custom proposal.

1-800-927-7694
435-655-4401

yarrow@harthotels.com

1800 Park Avenue
Park City, UT 84060

www.YarrowResort.com

Owned and operated by
HART HOTELS
HartHotels.com